

# State of Wyoming Corner Record

(In compliance with the CORNER PERPETUATION AND FILING ACT, Wyoming Statutes, 1997 Section 33-29-140 et. seq., and the Rules and Regulations of the Board of Professional Engineers and Professional Land Surveyors)

Reverse side of this form may be used if more space is needed.

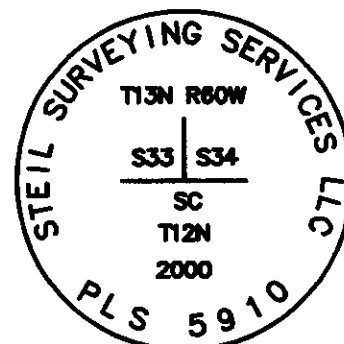
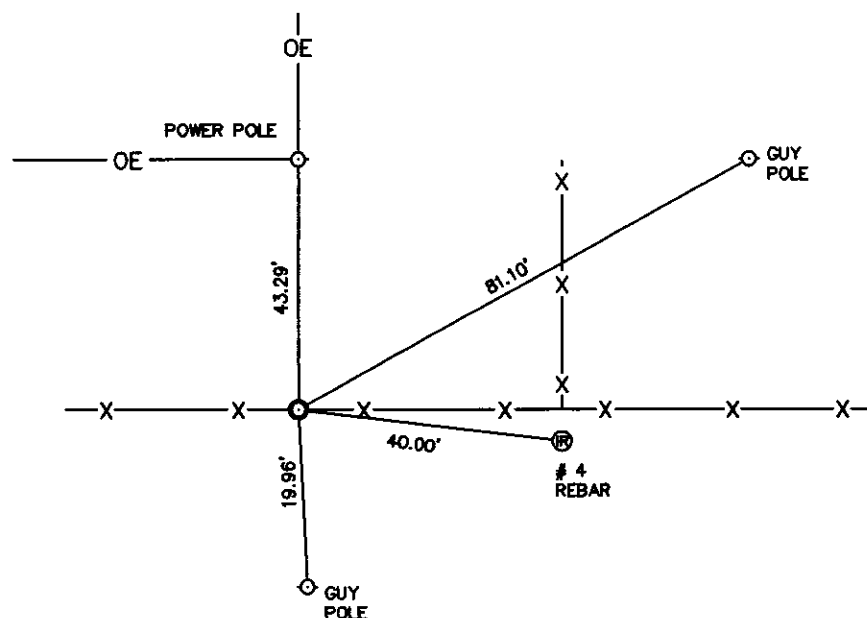
Record of original survey and citation of source of historical information (if corner is lost or obliterated). Description of corner monumentation evidence found and/or monument and accessories established to perpetuate the location of this corner. Sketch of relative location of monument, accessories, and reference points with course and distance to adjacent corner(s) (if determined in this survey). Method and rationale for reestablishment of lost or obliterated corner.

**RECORD:** UNKNOWN

**MONUMENT FOUND:** FOUND # 4 REBAR, NOT ACCEPTED

**MONUMENT SET:** SET 5/8" X 24" REBAR WITH A 3/4" ALUMINUM CAP.  
RESET BY FENCE LINE EVIDENCE THAT MATCHES  
PROPORTIONAL DISTANCE. CAP STAMPED AS SHOWN BELOW.

**REFERENCES:** MONUMENT LIES 43.29' SOUTH OF A POWER POLE AND  
19.96' NORTH OF A POWER POLE WITH GUY WIRE.



RECORDED 12/11/2006 AT 3:12 PM REC# 463327 JK# 1982 PG# 1776  
DEBRA K. LATHROP, CLERK OF LARAMIE COUNTY, WY PAGE 1 OF 2

Date of Field Work: 7/10/2000

Office Reference: 20199

## Monument Inscription

### Cross Index Plat

	1	2	3	4	5	6	7	8	9	10	11	12	13	14	15	16	17	18	19	20	21	22	23	24	25		
A	+	+	+	+	+	+	+	+	+	+	+	+	+	+	+	+	+	+	+	+	+	+	+	+	+	+	A
B	+	+	+	+	+	+	+	+	+	+	+	+	+	+	+	+	+	+	+	+	+	+	+	+	+	+	B
C	+	6	+	+	5	+	+	+	+	4	+	+	+	+	3	+	+	+	+	+	2	+	+	+	+	+	C
D	+	+	+	+	+	+	+	+	+	+	+	+	+	+	+	+	+	+	+	+	+	+	+	+	+	+	D
E	+	+	+	+	+	+	+	+	+	+	+	+	+	+	+	+	+	+	+	+	+	+	+	+	+	+	E
F	+	+	+	+	+	+	+	+	+	+	+	+	+	+	+	+	+	+	+	+	+	+	+	+	+	+	F
G	+	7	+	+	8	+	+	+	+	9	+	+	+	+	10	+	+	+	+	+	11	+	+	+	+	+	G
H	+	+	+	+	+	+	+	+	+	+	+	+	+	+	+	+	+	+	+	+	+	+	+	+	+	+	H
J	+	+	+	+	+	+	+	+	+	+	+	+	+	+	+	+	+	+	+	+	+	+	+	+	+	+	J
K	+	+	+	+	+	+	+	+	+	+	+	+	+	+	+	+	+	+	+	+	+	+	+	+	+	+	K
L	+	18	+	+	17	+	+	+	+	16	+	+	+	+	15	+	+	+	+	+	14	+	+	+	+	+	L
M	+	+	+	+	+	+	+	+	+	+	+	+	+	+	+	+	+	+	+	+	+	+	+	+	+	+	M
N	+	+	+	+	+	+	+	+	+	+	+	+	+	+	+	+	+	+	+	+	+	+	+	+	+	+	N
O	+	+	+	+	+	+	+	+	+	+	+	+	+	+	+	+	+	+	+	+	+	+	+	+	+	+	O
P	+	19	+	+	20	+	+	+	+	21	+	+	+	+	22	+	+	+	+	+	23	+	+	+	+	+	P
Q	+	+	+	+	+	+	+	+	+	+	+	+	+	+	+	+	+	+	+	+	+	+	+	+	+	+	Q
R	+	+	+	+	+	+	+	+	+	+	+	+	+	+	+	+	+	+	+	+	+	+	+	+	+	+	R
S	+	+	+	+	+	+	+	+	+	+	+	+	+	+	+	+	+	+	+	+	+	+	+	+	+	+	S
T	+	30	+	+	29	+	+	+	+	28	+	+	+	+	27	+	+	+	+	+	26	+	+	+	+	+	T
U	+	+	+	+	+	+	+	+	+	+	+	+	+	+	+	+	+	+	+	+	+	+	+	+	+	+	U
V	+	+	+	+	+	+	+	+	+	+	+	+	+	+	+	+	+	+	+	+	+	+	+	+	+	+	V
W	+	+	+	+	+	+	+	+	+	+	+	+	+	+	+	+	+	+	+	+	+	+	+	+	+	+	W
X	+	31	+	+	32	+	+	+	+	33	+	+	+	+	34	+	+	+	+	+	35	+	+	+	+	+	X
Y	+	+	+	+	+	+	+	+	+	+	+	+	+	+	+	+	+	+	+	+	+	+	+	+	+	+	Y
Z	+	+	+	+	+	+	+	+	+	+	+	+	+	+	+	+	+	+	+	+	+	+	+	+	+	+	Z
	1	2	3	4	5	6	7	8	9	10	11	12	13	14	15	16	17	18	19	20	21	22	23	24	25		

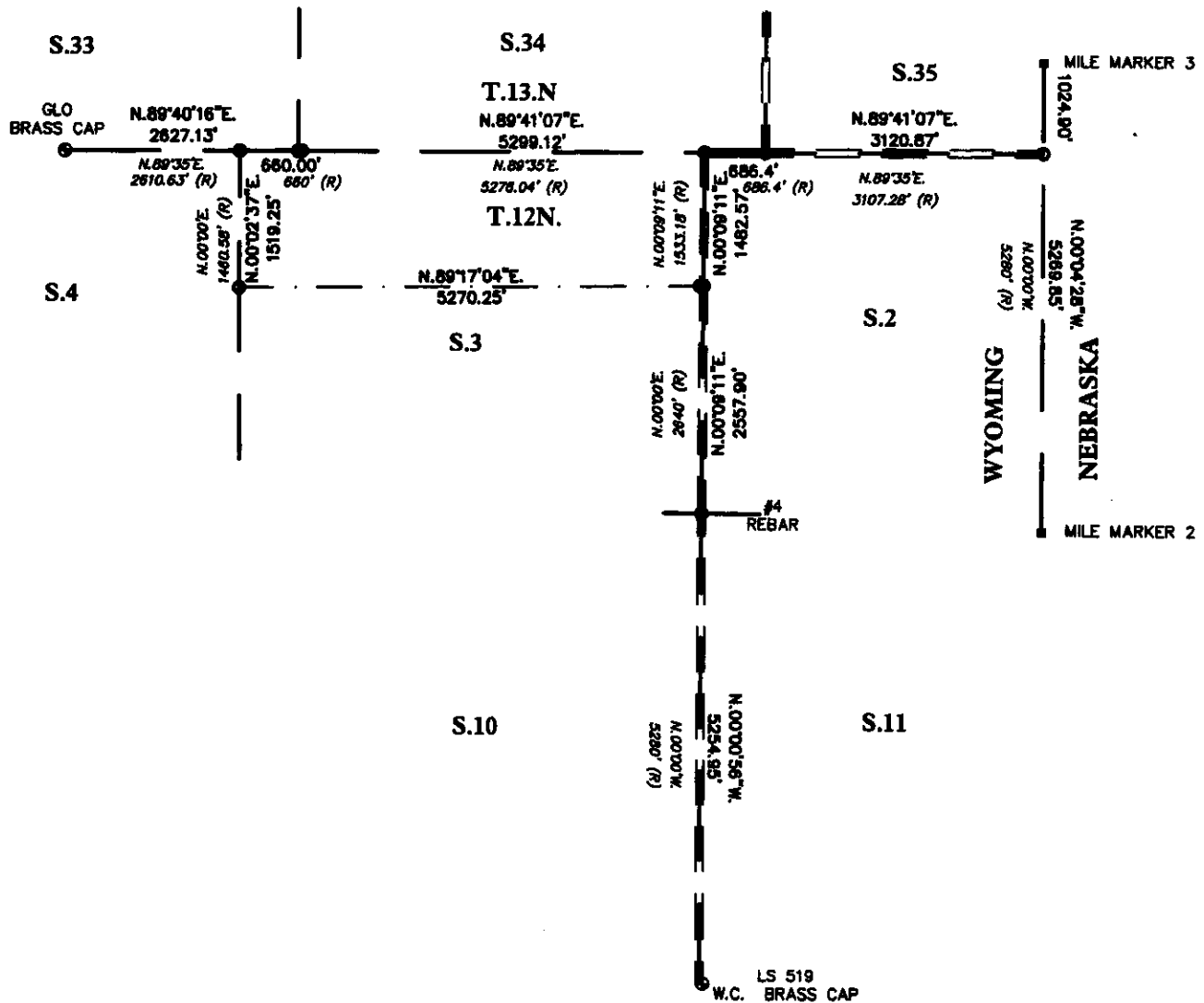
Firm/Agency, Address

**STEIL SURVEYING SERVICES LLC**  
**1102 WEST 19th STREET**  
**CHEYENNE WY 82001**  
Telephone Number: **(307) 634-7273**

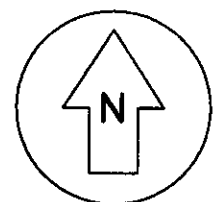
This corner record was prepared by me or under my direction and supervision.



Corner Name SE SECTION Corner Section 33, T 13 N, R 60 W, 6th P.M. Cross-Index No.: Z-13  
County: LARAMIE Wyoming  
SBRPEPLS/PLSW: March 1994; PLSW January 1998



RECORDED 12/11/2006 AT 3:12 PM REC# 463327 K# 1982 PG# 1777  
 DEBRA K. LATHROP, CLERK OF LARAMIE COUNTY, WY PAGE 2 OF 2



0 2000'

Scale: 1"=2000'

**STEIL SURVEYING SERVICES, LLC**  
 REGISTERED LAND SURVEYORS  
 1102 WEST 19th STREET P.O. BOX 2073  
 PH(307)434-7273 CHEYENNE, WY. 82003